

## NAVIGATOR



### 117'4" (35.8 m) NAKSKOV SHIPYARD

**LOA:** 117'4" (35.8 m)  
**Beam:** 25' (7.6 m)  
**Draft:** Min 8'5" (2.6 m)  
**Speed:** 8 knots @330 rpm / 9  
knots @375 rpm  
**Location:** Copenhagen, Denmark

**Year:** Mfg-1941 Model-1941  
Refit-2011  
**Mfg:** NAKSKOV SHIPYARD  
**Type:** Motor Yacht  
Conversion  
**Price:** 3,500,000 EUR

## Additional Specifications For NAVIGATOR:

---

<b>LOA:</b>	117'4" (35.8 m)	<b>Year:</b>	Mfg-1941 Model-1941 Refit-2011
<b>Mfg. Length:</b>		<b>Mfg:</b>	NAKSKOV SHIPYARD
<b>Beam:</b>	25' (7.6 m)	<b>Model:</b>	
<b>Draft:</b>	Min 8'5" (2.6 m)	<b>Type:</b>	Motor Yacht Conversion
<b>Hull Mtrl:</b>	Steel	<b>Top:</b>	
<b>Hull Cnfg.:</b>		<b>Speed:</b>	8 knots @330 rpm / 9 knots @375 rpm
<b>Hull Designer:</b>		<b>Engines:</b>	1xB & W Alpha Diesel 280 HP SMOH - 2009
<b>Deck Mtrl:</b>	Teak	<b>Engines Year:</b>	1942
<b>Disp:</b>	323 short ton (293 tonne)	<b>Staterooms:</b>	6
<b>Range:</b>	2400	<b>Sleeps:</b>	12
<b>Int Designer:</b>		<b>Heads:</b>	5
<b>Ext Designer:</b>		<b>Crew Quarters:</b>	
<b>Fuel Cap:</b>	16000 l (4227 g)	<b>Crew Berths:</b>	4
<b>Water Cap:</b>	8000 l (2114 g)	<b>Captain Cabin:</b>	No
<b>Holding Tank:</b>		<b>Classifications:</b>	Unknown
<b>Flag:</b>	Danish	<b>Class Type:</b>	Danish Maritime Authority
<b>Location:</b>	Copenhagen, Denmark	<b>MCA:</b>	
		<b>ISM:</b>	
		<b>Price:</b>	3,500,000 EUR

---

### Accommodations

Accommodation

- Owner's cabin (2 persons) with king size bed and owner's bath room with shower and bath tub
- 2 staterooms (2 persons) with double beds and en-suite bathrooms
- 2 guestrooms (1-2 persons) with one shared bath room
- 1 room with bunkbeds (2 persons)

### Audio And Visual Equipment

Entertainment and communication equipment

- Bang & Olufsen
- B&O link system
- B&O Beomaster 5000 digital music system with internet radio
- B&O speakers
- 3 B&O Televisions (TV in saloon and in dining/meeting room may be used as PC monitors)
- Wireless Internet

- GSM and NMT connections (covering the charter area)

## **Crew Quarters**

Crew accommodation:

- 4 cabins with single berths
- 1 shower and 1 toilet - separate
- Crew mess in the crew living area
- Crew lounge - next to galley

## **Deck Equipment**

Deck equipment

- 2 \* anchors
- Anchor winch – Thrige Titan (220 V DC)
- Capstan winch – Thrige Titan (220 V DC)
- MOB crane (850 kg) – ACTA
- Crane on fore deck (100 kg)
- 2 Wiska search lights

## **Electrical System**

Technical equipment:

Heating system: Air handler unit / electric floor heating

Air handler unit: LUBI, LVA-13 / 21.3 kW heating

Sanitary system: Grey water tank capacity: 6.000 litres

Black water capacity: 5.000 litres

Electrical system: IHC (computer) managed electrical system

Alarm and monitoring system: ViewCOM 6300 (Hastrup Automation/Phoenix Contact)

- Diesel tanks
- Engines
- Bilge water
- Water tanks (fresh and sanitary water)
- Pumps
- Air handler unit
- Fire alarm
- Burglar alarm

## **Electronics and Navigational Equipment**

Navigation equipment

Depth sounder: Furono LS-4100

Marine radar: Furono FR-360 Mark II

Magnetic compass: NS 150 A

GPS: Furono WAAS NAVIGATOR

Steering machine: Svendborg

## **Engine /Mechanical Equipment**

Machinery

Engine: B&W Alpha Diesel / 206 kW / 375 rpm / built 1948 / refit 2009-2010

Generator: John Deere/Stamford: 85 kAV / 230 V AC / 400 V AC / 50 Hz

Dynamo: Lister HR / 220 V DC

## **Galley**

Galley and laundry equipment

- Olis professional gas oven and stove
- Miele microwave / grill / hot air oven
- Gaggenau refrigerator, freezer, icemaker
- Additional Siemens refrigerator (galley) and Siemens freezer (stores room)
- Miele dishwasher
- Reneka espresso machine and grinder
- 2 sinks with food waste disposers
- Miele washing machine and dryer

## **History**

### **Preserving tradition – celebrating Nordic culture and design**

The history of M/S NAVIGATOR relates to Danish maritime traditions and the Port of Copenhagen. The ship was originally built as a cable ship in 1941 according to the highest standards of the industrial area. Subsequently, in 1962 it was rebuilt as a training vessel for Danish merchant marine officers.

During the period 2005 - 2011 M/S NAVIGATOR was renovated while paying respect to the historical value of this unique sample of the official Danish fleet. The ship went through an exhaustive overhaul, cosmetically but also in its functionality. It was decided to preserve the original exterior appearance as well as the interior of the crew quarters. Likewise, the machine room was refitted according to its original design while adding elements required by today's standards.

The remainder of the ship's interior has on the contrary been fully updated according to Danish quality and interior design traditions.

### **Gentle environmental footprints:**

M/S NAVIGATOR pays respect to the environment. Remarkably low fuel consumption marks the difference between traditional and modern naval dimensioning.

## **Safety And Fire Protection**

Safety and security equipment

- 2 \* Zodiac 20 EC life rafts for 20 people each
- Zodiac MOB boat – see under “Tenders and toys”
- 20 Secumar auto-inflatable life-jackets + 2 life-jackets for children
- 11 fire extinguishers
- FM 200 machine room fire extinguisher
- ServoFighter C4 fire alarm system
- Smoke indicators in all cabins/rooms
- 2 \* Automatic fire doors
- EPIRB
- SART
- 2 independent bilge pump-systems
- 2 Wiska search lights
- Burglar alarm

## **Tenders**

Tenders and toys

- Zodiac RIB / MOB certificate / 5.5 meters (18 feet) / 115 hp – max 14 persons
- Traditional modified rescue boat (1962) / 5,6 meters (18,3 feet) / 7 hp Sabb – max 18 persons
- Small inflatable boat / 2.0 meters (6.6 feet) / 2.3 hp

## **Vessel Walkthrough**

The central area of the ship connects all 3 interior decks – from the saloon on boat deck through the hall on main deck to the central hallway on tween deck. From the brass-plate-covered hall on main deck there is access to two single staterooms with one big bathroom fore and a guest toilet. The dining/meeting room with a large round table seating up to 12 guests is situated aft of the hall.

Further aft follows the galley on port side. Two double staterooms are located on tween deck - each with en suite bathrooms. Also on tween deck owner's quarters including hall, large bathroom and large double stateroom. Further, the deck contains a laundry room.

The floors are “floating” and the lining is fitted with rubber absorbers in order to minimize noise and vibrations. Most of the floors and the main staircase in the hall are covered with lava clinker from mount Edna/Sicily; all furniture is manufactured in teak. As a counter balance to the modern interior the original doors, door handles, fire alarm bells and internal communication system have been refitted.

Crew quarters are situated on tween deck aft.

## **Disclaimer**

All Particulars are given in good faith and are believed correct but they cannot be guaranteed.

## Profile



## Aft



**NAVIGATOR**

## Saloon



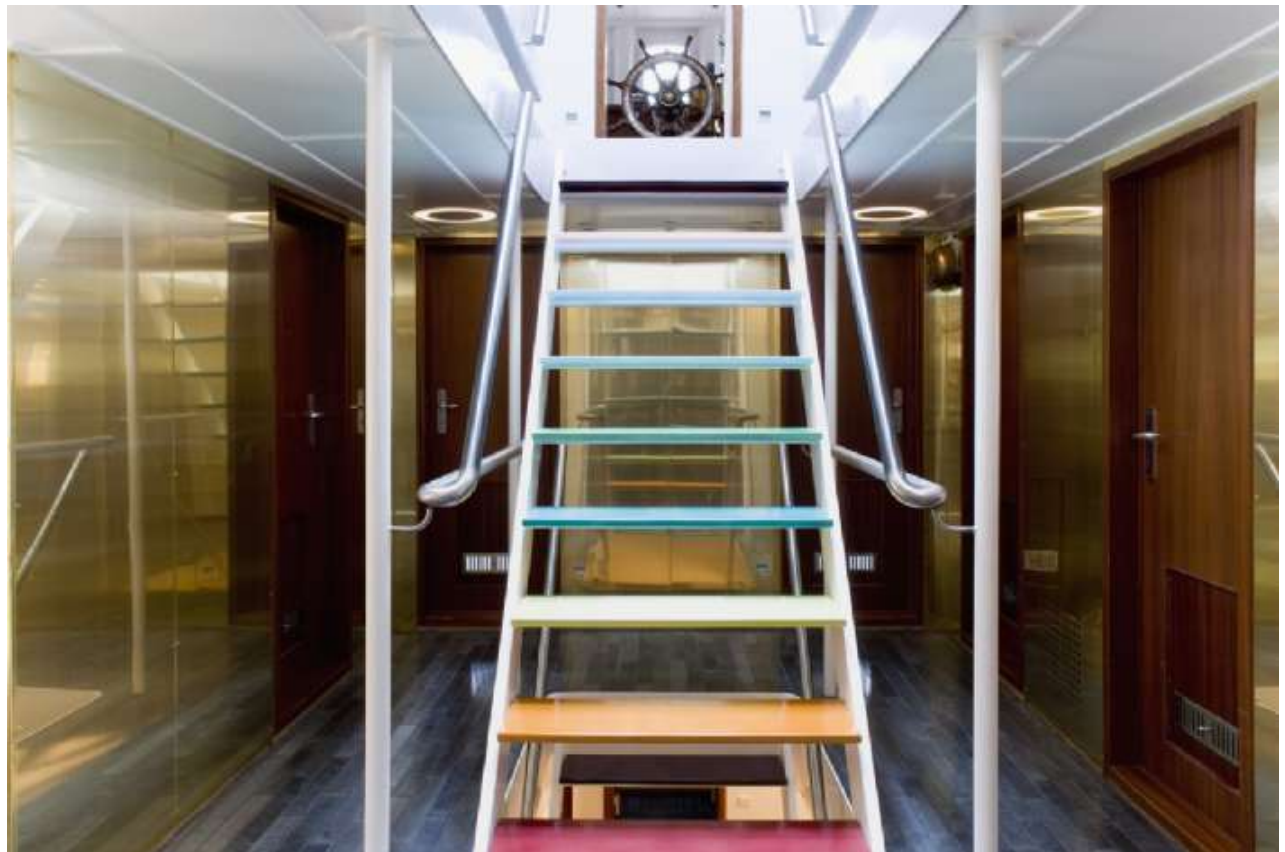
## Master Stateroom



## Master bath



## Hall





## Dining



## Dining



## VIP Stateroom



## Guest Stateroom



## Galley



## Crew Lounge



**Sundeck**



**Aft Deck / Main**



## Aft Deck / Boat



## Tenders



## Tenders



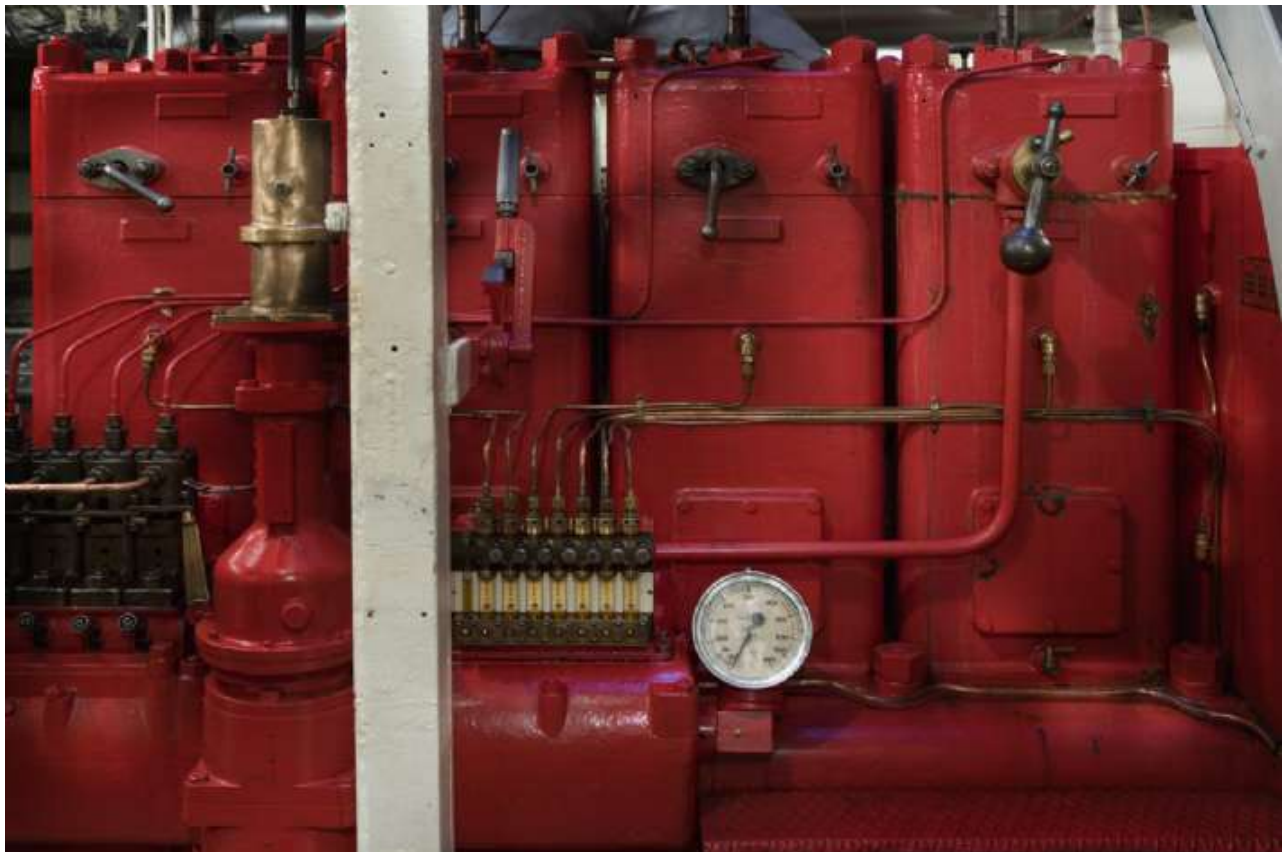
## Other



## Pilothouse



## Engine /Mechanical Equipment



## Layout

