



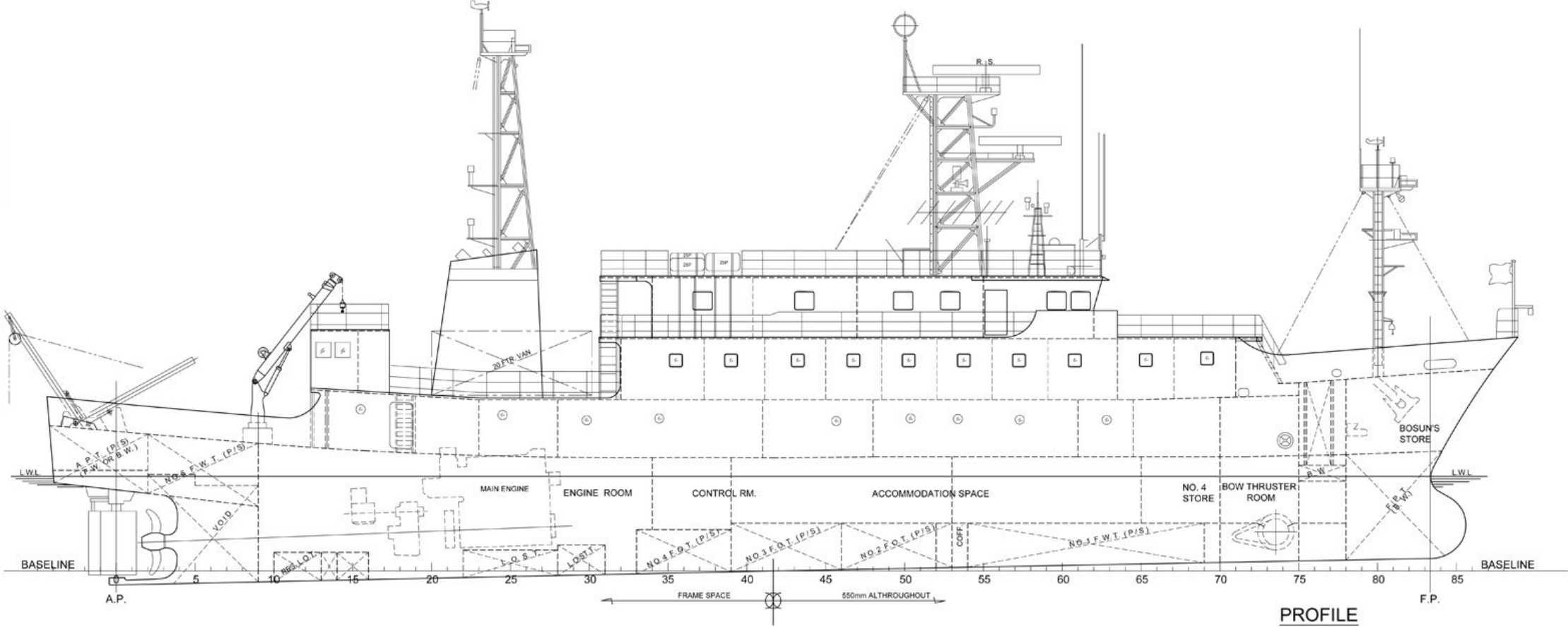
OFFSHORE SOLUTIONS UNLIMITED



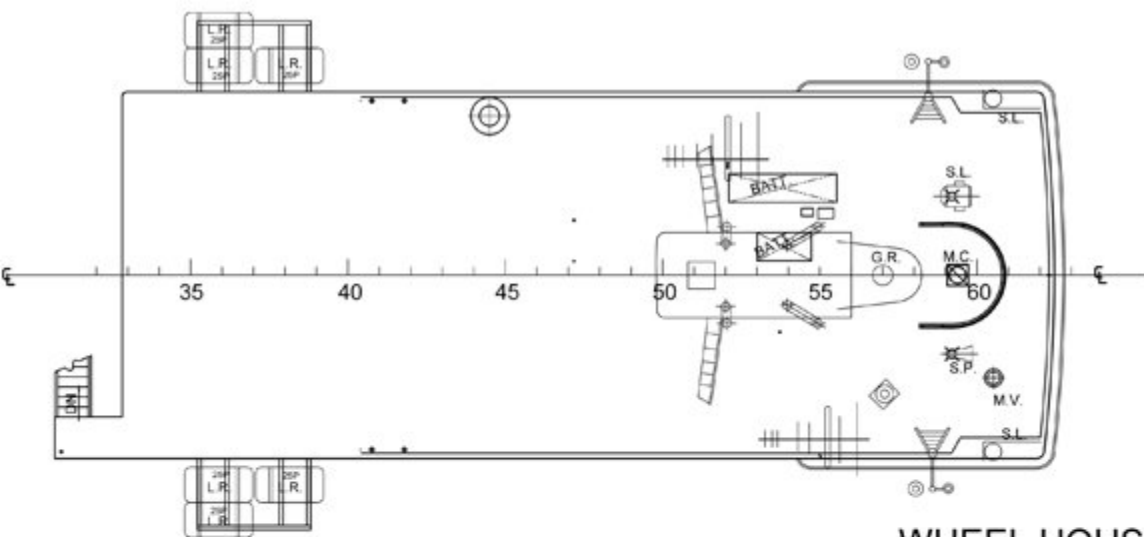
GENERAL INFORMATION	
CLASS TYPE	RESEARCH VESSEL
FLAG/COUNTRY	TUVALU
HULL MATERIAL	STEEL
BUILDER	ISHIKAWAJIMA HARIMA (IHI) TOKYO
YEAR BUILD	NOVEMBER 1987
MAIN ENGINE	AKASAKA MODEL A31, 1,800PS X 1
AUX ENGINE	2 YAMAHA x 250 KW + SHAFT GENERATOR
BOW THRUSTER	1 CCP
PROPELLER	1 CCP
SPEED	MAXIMUM 14 KNOTS:10 KNOTS SERVICE SPEED
LENGTH (OVER ALL)	56 M
LENGTH (BET PP)	50.21 M
BEAM	9.80 M
DRAFT MAX	4.30 M
GROSS TONNAGE	849 TONS
NET TONNAGE	255 TONS
SAFETY EQUIPMENT	CLASS AND STATUTORY CERTIFICATES
CLASS	ClassNK
CONDITION	FULLY OPERATIONAL IN CLASS
VESSEL IS FULLY INSURED WITH P&I AND HULL & MACHINERY INSURANCE	
FUEL CONSUMPTION	
MAIN ENGINE	2, 800 LITERS/ DAY/SERVICE SPEED
GENERATOR SET	700 LITERS/ DAY/1 GENERATOR
INDURANCE	10,000 NM
FUEL TANKS	145 M ³
WATER TANKS	100 M ³
WATER MAKER	12 TONS /DAY

WHEELHOUSE	LARGE WHEELHOUSE W/ CHARTROOM AND OFFICE
RADAR	1(TOKIMEC BR-344CCA/MA); TRANSPONDER X (1 JRC JQC JQX-30A) ARPA
GPS	1 (TOKIMEK CR-3000)
ECDIS	SIMRAD CS66
RADIO	VHF/DSC X 1 (JRC JHS-32A) ; EPIRB X 1 (JRC JQE-3A); AIS X 1 (TOKYO KEIKI TRA-2000); NAVTEX RECEIVER X 1 (ANRITSU RR103A)
GMDSS	A1 + A2 + A3
DEPTH/FISH FINDER	YES
CURRENT METER	YES
AUTO PILOT	YES
SEARCH LIGHTS	1
FACILITIES ON BOARD	
ACCOMMODATION	56 PERSONS CAPACITY
CABINS	4 x 1PAX WITH BATHROOM 20 x 1 PAX WITH SHARED BATHROOM 12 x 2 PAX WITH COMMON BATHROOM 2 x 1 PAX WITH COMMON BATHROOM 2 x 3 PAX WITH COMMON BATHROOM
OFFICER'S MESS	1
CREW MESS	1
RECREATION ROOM	1
SURVEY ROOMS	1
OFFICES	2
WALK IN FREEZER	1
WALK IN REF	1
DECK EQUIPMENTS	
DECK AREA	90 M ²
DECK REPAIR SHOP	1
WINCH	2 x FORWARD; 2 x AFT DECK
GRUND TACKLE	2 ANCHORS
DECK CRANE	2 TONS AFT DECK
A FRAME	8 TONS
CONTAINER SPACE	3

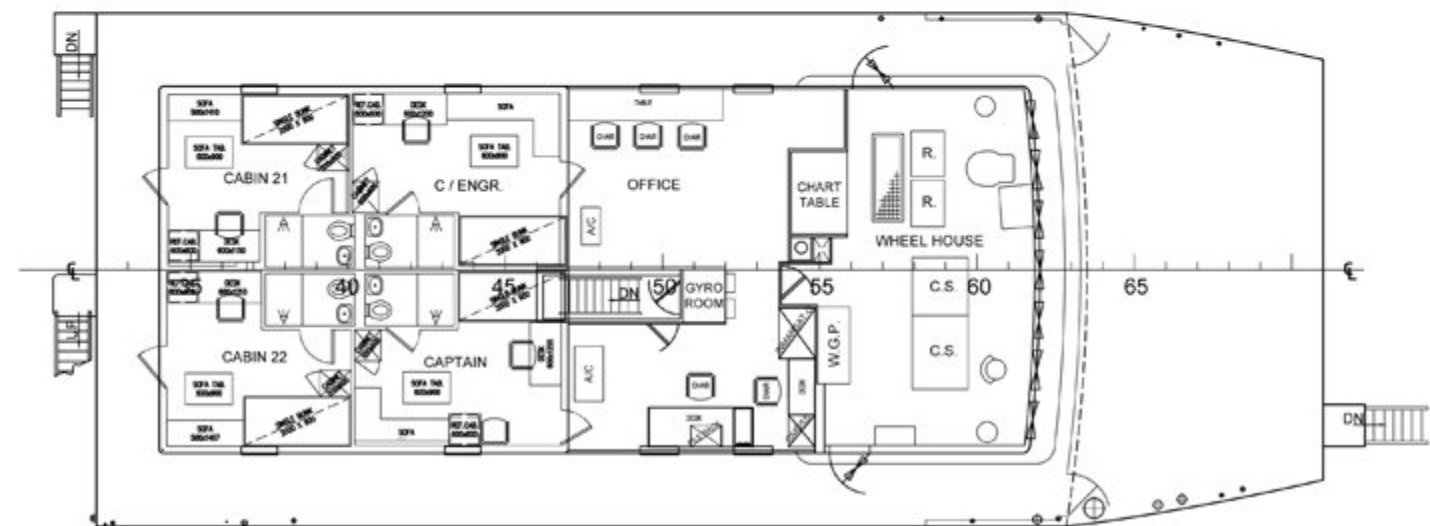
All details without guarantee



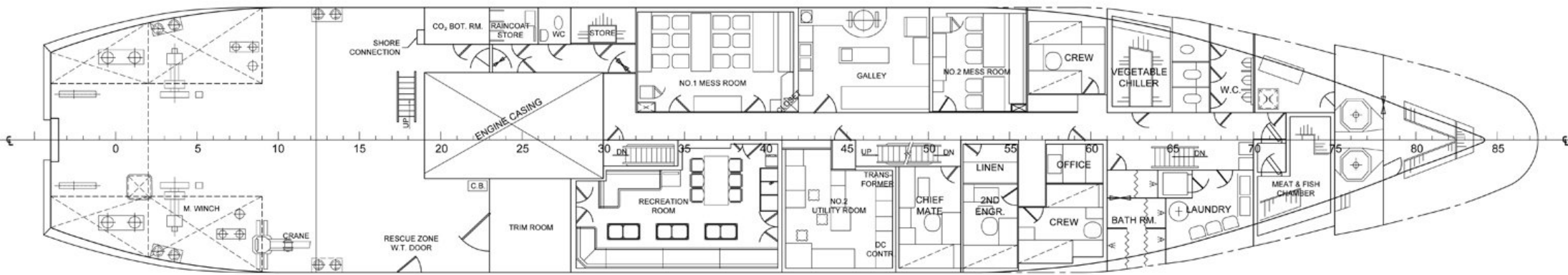
PROFILE



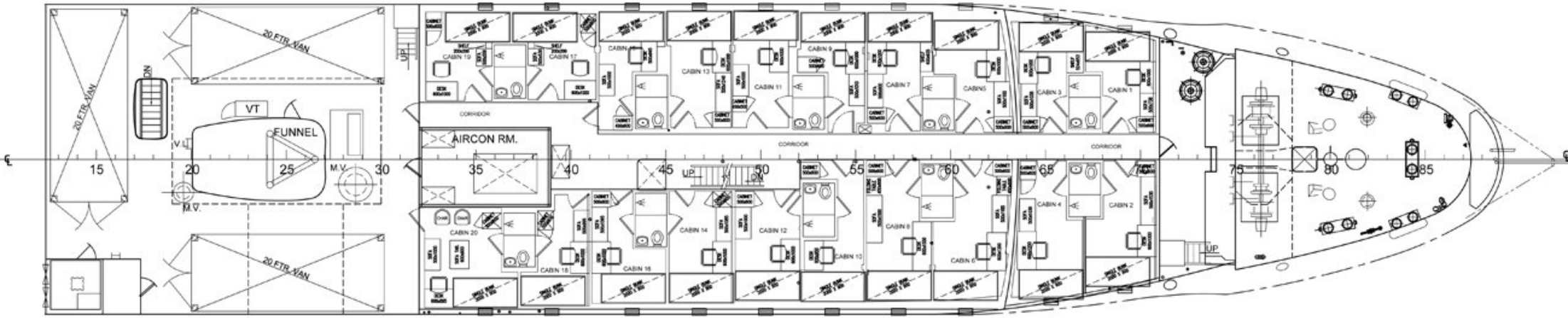
WHEEL HOUSE TOP



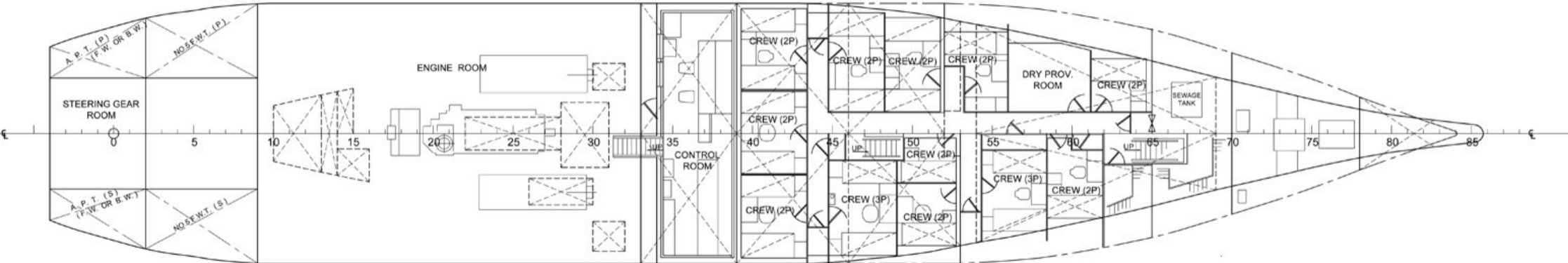
NAV. BRIDGE DECK



UPPER DECK



LONG'L. F'CLE DECK



TANK TOP