



DESCRIPTION

MV 'Togo' was built in 1965. Operational as fishing trawler until 1997. Fundamental refits in 2002 and 2012. Her finishing is in line with the character of the vessel. Not glamorous but with all modern comfort and equipment.

SPECIFICATION

- HOME PORT: Scheveningen (NL)
- YEAR BUILT: 1965
- YEAR REFIT: 2002 & 2012
- LENGTH: 31.23 metres
- BEAM: 7.12 metres
- CONSTRUCTION: Steel
- CRUISING SPEED: 9-10 knots
- FRESH WATER: 11,000 litres
- FUEL: 25,000 litres
- FUEL CONSUMPTION: 40 litres per hour
- BUILDER: Richard Dunston Ltd, Yorkshire
- ENGINES: Lister Blackstone 540 HP
- COMMUNICATION: Furuno, 2 VHF, Receiver, Plotter, DGPS+AIS

ACCOMMODATION

TOTAL GUESTS (SLEEPING): 10

TOTAL GUESTS (CRUISING): 11

NUMBER OF CREW: 5

CREW QUARTERS: Separate with own facilities

AIR CONDITIONING: No

ACCOMMODATION DESCRIPTION

1 x Double cabin, 3 x Twin cabins, All cabins are en-suite

AMENITIES

Beautiful deckhouse saloon suitable for 20 pax business meetings

LEISURE

2 x Tenders (15 HP and 9 HP)

Notes: Lister Blackstone 540 hp - economic engine

10 kn on only 1 ton gasoil/day

aux 20 kW silentpack and 18 kW

25 ton gasoil capacity - 11 ton fresh water capacity

Zodiac tender with outboard engine - crane

Vessel has a commercial yacht license to sail with 12 passengers

Panama flag

Price: USD 295.000

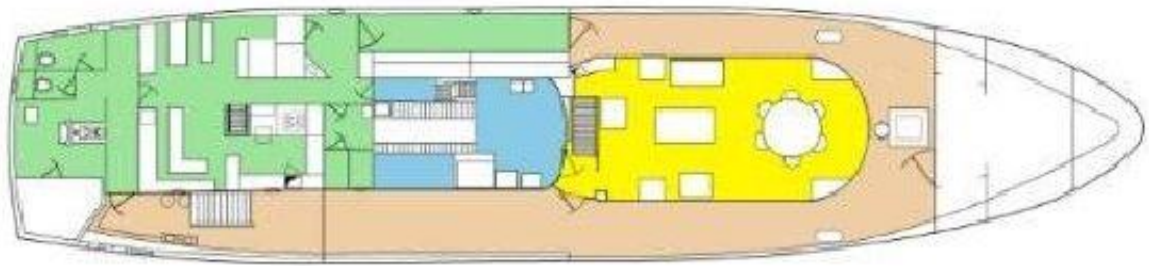
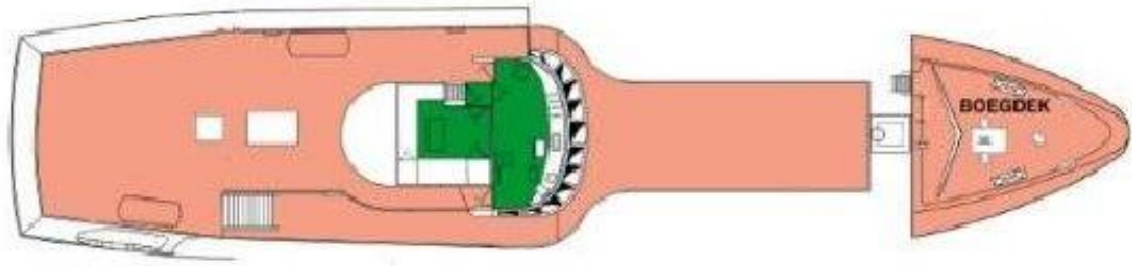
Inspection: The Netherlands



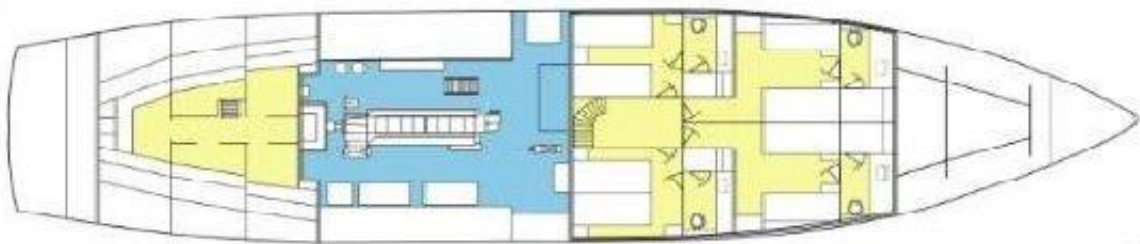
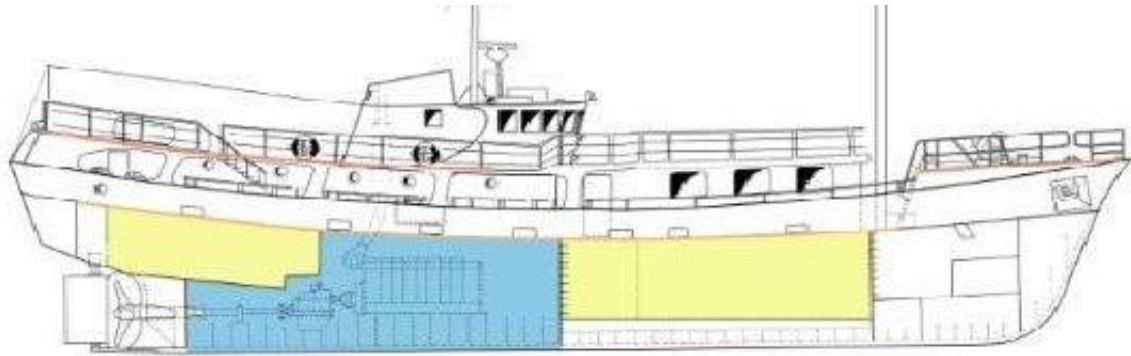








I





All details without guarantee



OFFSHORE SOLUTIONS UNLIMITED